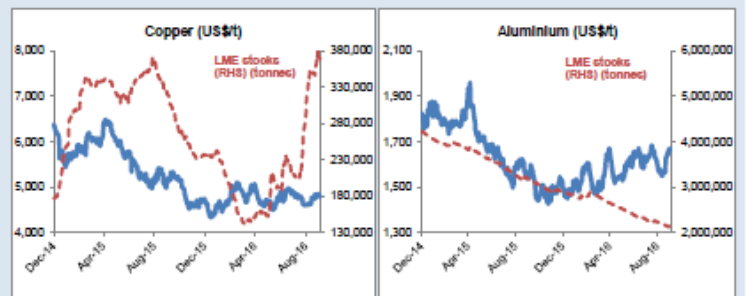
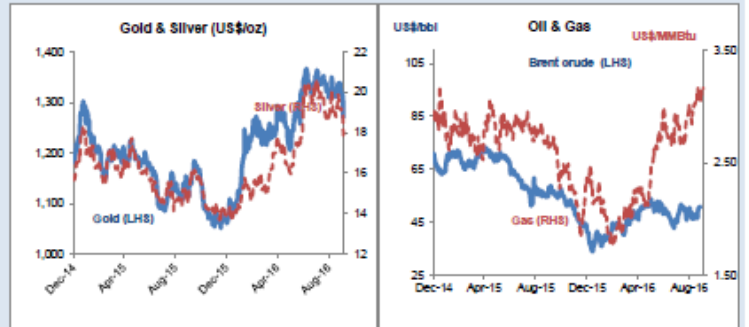


Daily Resources Overview

Commodity price movement

Commodity	Price	1D %ch	1M %ch	1Y %ch	YTD %ch
Precious Metals (COMEX)					
Gold (US\$/oz)	1,272	-3.1	-3.1	12.5	21.1
Silver (US\$/oz)	17.94	-4.9	-8.1	17.1	29.0
Platinum (US\$/oz)	992	-1.7	-7.2	8.6	10.6
Industrial Metals (LME)					
Copper (US\$/t)	4,786	-0.3	3.7	-6.4	1.7
Aluminium (US\$/t)	1,863	-0.3	5.5	7.6	10.8
Lead (US\$/t)	2,085	-1.2	6.7	27.0	14.9
Zinc (US\$/t)	2,377	-1.1	0.4	42.7	49.3
Tin (US\$/t)	19,965	-0.3	2.8	27.6	36.6
Nickel (US\$/t)	10,031	-2.6	0.3	0.4	14.2
Bulks					
Iron Ore (US\$/t)	55.86	0.0	-5.9	5.1	28.2
Thermal Coal (US\$/t)	61.80	weekly data	-0.6	-25.4	-2.0
Energy					
Brent Crude (US\$/bbl)	51	-0.1	7.6	-7.6	14.5
Natural Gas (US\$/MMBtu)	3.16	0.9	7.9	19.2	33.8
Uranium (US\$/lb)	22.45	0.0	-12.6	-39.3	-35.3
Softs					
Wheat (US\$/bu)	396	0.0	-0.9	-27.6	-22.1
Sugar (US\$/lb)	23	2.6	12.0	70.7	54.0
Corn (US\$/bu)	348	0.7	6.0	-15.1	-9.1
Soy (US\$/bu)	964	-1.0	1.2	9.1	9.1
Cotton (US\$/lb)	70	1.7	3.5	18.0	10.4
Other					
CRB Comdty Index	402	-0.1	-1.0	0.0	7.3

Wednesday 05 October 2016



Global resource share price movement

Company Name	Sector	1D %ch	1M %ch	1Y %ch	YTD %ch
Barrick Gold	Gold	-11.2	-14.9	135.2	109.3
Newmont	Gold	-10.1	-15.5	100.6	90.4
Goldcorp	Gold	-8.8	-10.2	10.8	24.5
Anglo Platinum	Platinum	-5.8	-15.1	46.7	92.1
Anglo American	Diversified	-0.9	22.1	78.2	229.4
BHP Billiton PLC	Diversified	1.5	12.6	-2.6	28.2
Rio Tinto PLC	Diversified	0.5	12.5	16.8	32.3
Teck Resources	Diversified	-4.3	2.1	234.6	322.3
Glenore	Diversified	1.2	19.6	128.9	140.3
Vale	Iron Ore	-1.4	0.5	7.7	51.9
Fortescue	Iron Ore	0.2	-2.4	162.7	162.0
South32	Diversified	0.0	21.7	79.6	131.9
China Shenhua	Coal	-1.3	4.8	19.7	24.6
Freeport McMoRan	Copper	-2.9	-0.9	-2.2	53.4
Antofagasta	Copper	-0.7	5.0	4.4	13.4
Alcoa	Aluminium	0.8	0.7	7.1	3.3
Chinalco	Aluminium	1.0	0.3	8.2	12.5
Rusal	Aluminium	7.2	-1.7	-10.2	19.0
Norisk Nickel	Nickel	-0.7	3.9	12.5	25.5
Timah PT	Tin	-1.2	1.9	25.0	63.4
Boliden	Zinc	1.1	10.8	52.9	43.2
Cameco	Uranium	-3.1	-11.4	-35.2	-37.2
Arcelor Mittal	Steel	0.2	0.9	48.2	81.6

Commodity currency exchange rates (note: red = weakness against US\$)

Cross-rate	Spot	1D %ch	1M %ch	1Y %ch	YTD %ch
AUD/USD	0.76	-0.7	0.5	7.6	4.6
USD/ZAR	13.84	-1.7	4.0	-1.6	11.8
USD/BRL	3.28	-1.4	0.9	20.1	21.7
USD/CAD	1.32	-0.5	-2.0	-0.8	4.9
USD/RUB	62.81	-0.7	3.4	2.8	15.5
USD/CNY	6.67	-0.1	0.1	-4.7	-2.7

LME warehouse inventories

Commodity	Tonnes	1D %ch	1M %ch	1Y %ch	YTD %ch
Copper	368,525	-0.9	15.7	15.4	56.0
Aluminium	2,148,275	-0.3	-3.2	-32.3	-25.8
Lead	190,400	0.1	1.7	17.8	-0.7
Zinc	447,550	2.0	-0.7	-24.8	-3.6
Tin	3,570	1.7	-20.0	-24.1	-41.9
Nickel	361,464	-0.1	-1.9	-20.2	-18.1

