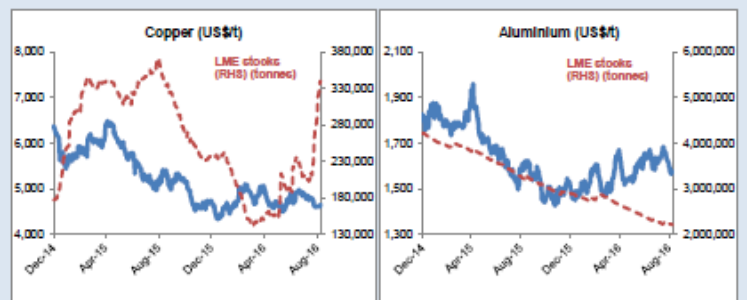
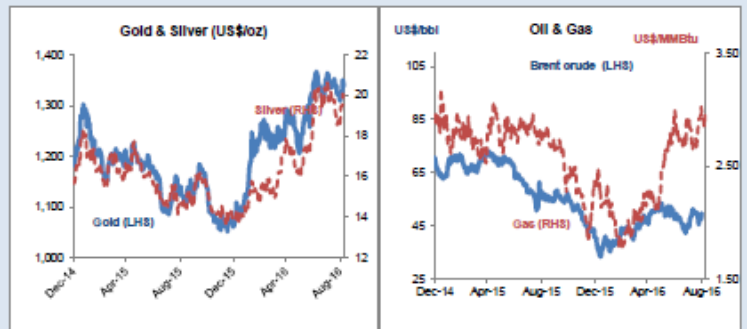


Daily Resources Overview

Commodity price movement

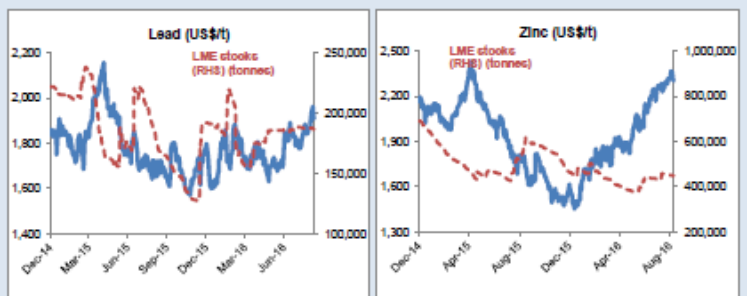
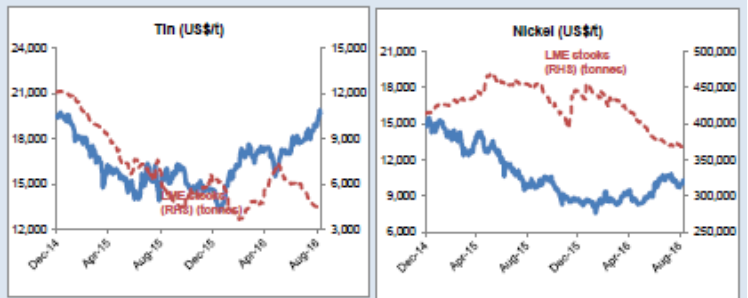
Commodity	Price	1D %ch	1M %ch	1Y %ch	YTD %ch
Precious Metals (COMEX)					
Gold (US\$/oz)	1,318	0.0	-2.4	15.1	23.9
Silver (US\$/oz)	19.31	0.1	-0.3	26.6	38.8
Platinum (US\$/oz)	1,032	0.1	-7.6	6.0	15.3
Industrial Metals (LME)					
Copper (US\$/t)	4,769	0.3	-0.3	-9.5	1.3
Aluminium (US\$/t)	1,564	-0.3	-5.5	-3.2	4.2
Lead (US\$/t)	1,973	1.1	5.5	17.3	9.8
Zinc (US\$/t)	2,288	2.3	0.1	36.8	43.7
Tin (US\$/t)	19,480	0.6	5.0	28.3	33.8
Nickel (US\$/t)	10,262	1.6	-0.4	6.4	16.9
Bulks					
Iron Ore (US\$/t)	55.77	0.2	-8.5	-3.3	28.0
Thermal Coal (US\$/t)	61.80	weekly data	-0.6	-25.4	-2.0
Energy					
Brent Crude (US\$/bbl)	46	0.4	-9.8	-15.0	5.4
Natural Gas (US\$/MMBtu)	3.17	4.0	19.5	17.1	34.0
Uranium (US\$/lb)	24.95	0.0	-3.3	-33.5	-28.1
Softs					
Wheat (US\$/bu)	406	0.5	-8.7	-22.6	-20.0
Sugar (US\$/lb)	23	-0.2	11.9	82.9	50.3
Corn (US\$/bu)	341	1.0	-0.9	-15.5	-11.1
Soy (US\$/bu)	990	1.8	-1.5	13.8	12.1
Cotton (US\$/lb)	71	2.7	4.8	18.3	11.9
Other					
CRB Comdty Index	401	0.3	-2.7	-0.7	7.2

Wednesday 21 September 2016



Global resource share price movement

Company Name	Sector	1D %ch	1M %ch	1Y %ch	YTD %ch
Barrick Gold	Gold	0.1	-16.5	154.8	133.1
Newmont	Gold	-0.7	-13.6	124.7	112.1
Goldcorp	Gold	0.3	-14.2	16.3	36.1
Anglo Platinum	Platinum	-2.6	-14.7	27.7	101.2
Anglo American	Diversified	-0.4	-1.4	19.1	188.4
BHP Billiton PLC	Diversified	1.0	-3.2	-13.6	15.4
Rio Tinto PLC	Diversified	0.0	-3.5	2.6	19.2
Teck Resources	Diversified	-0.5	16.2	190.8	342.1
Glencore	Diversified	0.3	4.5	56.3	117.7
Vale	Iron Ore	0.8	-11.2	-9.1	40.1
Fortescue	Iron Ore	1.4	0.6	151.1	165.2
South32	Diversified	0.4	14.2	57.4	118.8
China Shenhua	Coal	1.7	6.2	17.0	20.0
Freeport McMoRan	Copper	-0.6	-16.9	-8.5	47.0
Antofagasta	Copper	-1.6	-12.7	-15.0	5.0
Aloca	Aluminium	0.9	-8.1	-5.3	-4.4
Chinalco	Aluminium	1.1	0.0	6.8	10.5
Rusal	Aluminium	-0.4	-0.7	-17.3	16.9
Norilsk Nickel	Nickel	-0.6	-3.8	-10.3	19.2
Timah PT	Tin	0.0	-12.9	20.2	47.5
Boliden	Zinc	-0.4	-2.5	34.5	28.8
Cameco	Uranium	-0.2	-5.6	-34.6	-32.5
Arcelor Mittal	Steel	-2.8	-13.6	7.6	63.6



Commodity currency exchange rates (note: red = weakness against US\$)

Cross-rate	Spot	1D %ch	1M %ch	1Y %ch	YTD %ch
AUD/USD	0.76	0.0	-1.0	5.9	3.7
USD/ZAR	13.91	0.0	-2.4	-3.1	11.2
USD/BRL	3.26	0.4	-1.8	22.3	21.5
USD/CAD	1.32	0.0	-1.9	0.5	4.9
USD/RUB	64.75	0.1	0.1	2.0	12.0
USD/CNY	6.67	-0.1	-0.3	-4.5	-2.7

LME warehouse inventories

Commodity	Tonnes	1D %ch	1M %ch	1Y %ch	YTD %ch
Copper	347,950	-0.5	65.2	3.8	47.3
Aluminium	2,168,175	0.3	-3.4	-32.9	-25.1
Lead	189,025	0.5	1.1	14.6	-1.4
Zinc	444,400	0.0	-2.5	-27.0	-4.3
Tin	3,750	-2.0	-20.6	-27.0	-38.9
Nickel	365,784	-0.3	-2.1	-19.3	-17.1

